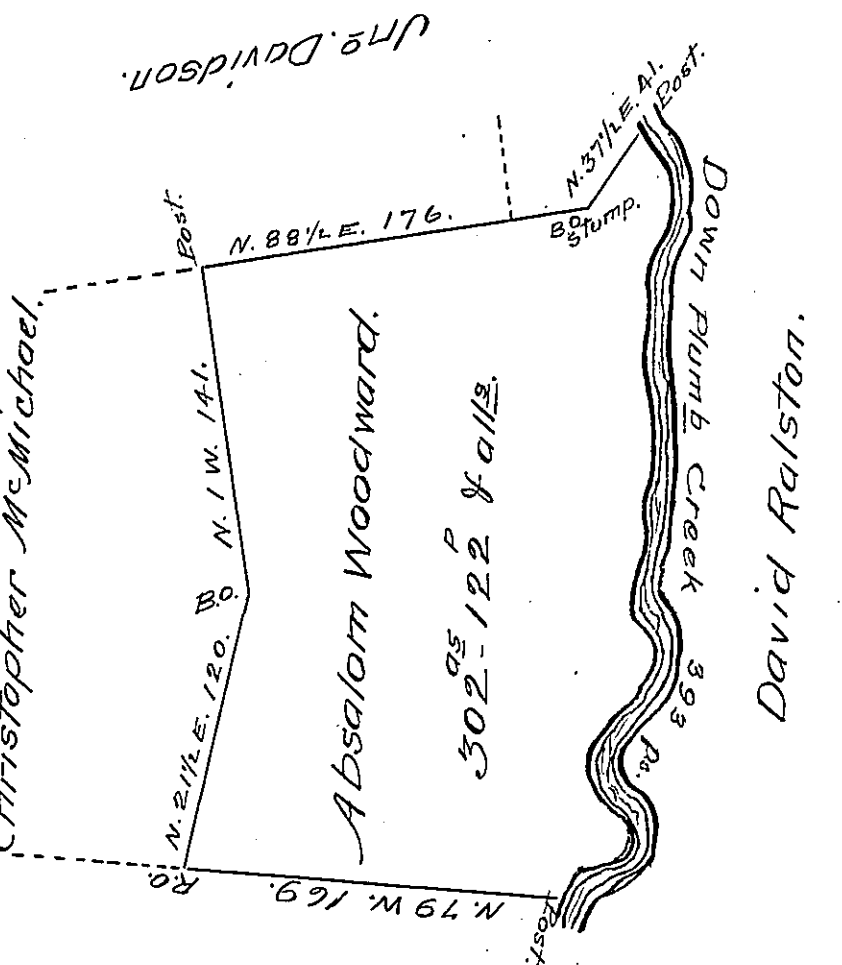


Courses and Distances
down the creek.

S. 19	E.	32.
S. 28 1/2	W.	40.
S. 11 1/2	E.	16.
S. 25	W.	26.
S. 21	E.	16.
S. 13	W.	42.
South		16.
S. 30	W.	17.
SOUTH		20.
S. 34	E.	18.
S. 5 1/2	W.	57.
S. 14	E.	20.
S. 40	E.	26.
S. 52	W.	22.
N. 66	W.	11
S. 35	W.	17
		<u>Total 393 ps</u>



Joseph Clark.

Surveyed to Absalom Woodward on the 2^d. day
of December 1807 the above described Tract of Land
Containing Three hundred and two acres and one
hundred and twenty two perches and the allowance
of 6 1/2 Cent 1/2. Situate in Kittanning Township Arm-
strong County By Warrant of the 27th day of October
A. D. 1807.

Geo. Ross D.S.

To Sam^l. Cochran Esq^r. S.G.

IN TESTIMONY that the above is a copy of the original remaining on file in
the Department of Internal Affairs of Pennsylvania, made
conformably to an Act of Assembly approved the 16th day of
February, 1833, I have hereunto set my Hand and caused
the Seal of said Department to be affixed at Harrisburg,
this twenty second day of April 1907.

Isaac R. Brown
Secretary of Internal Affairs.